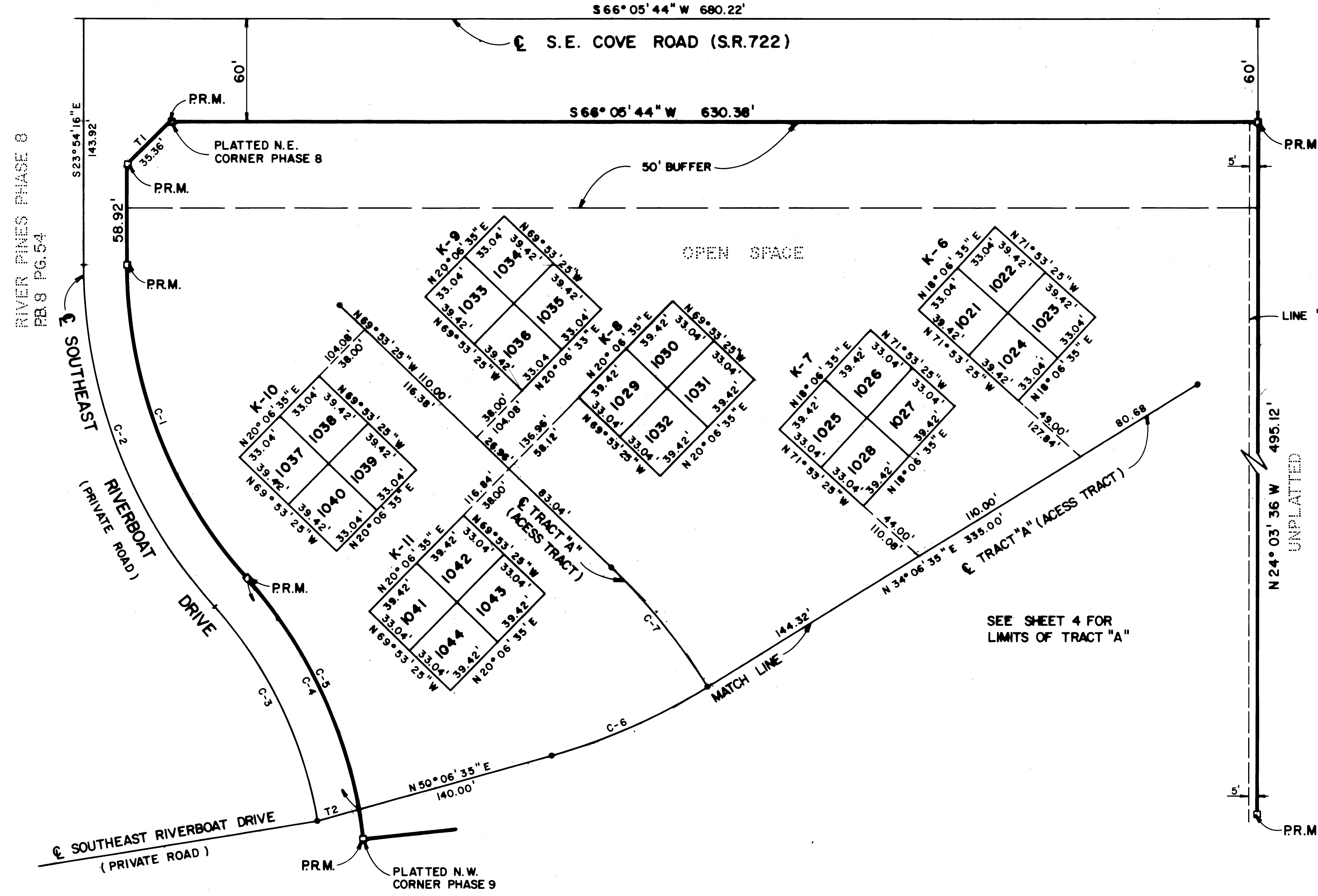
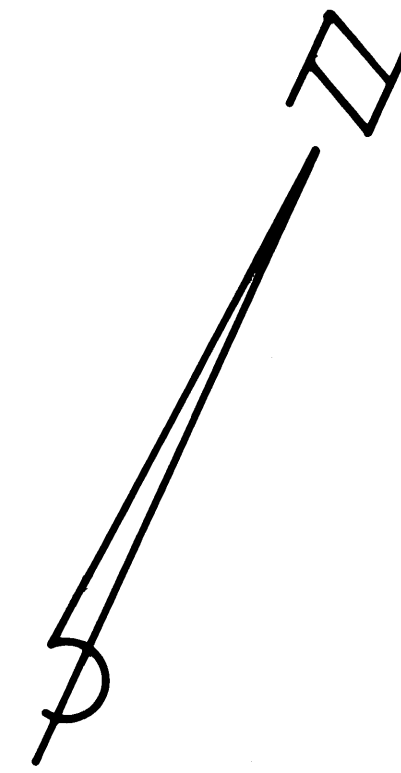
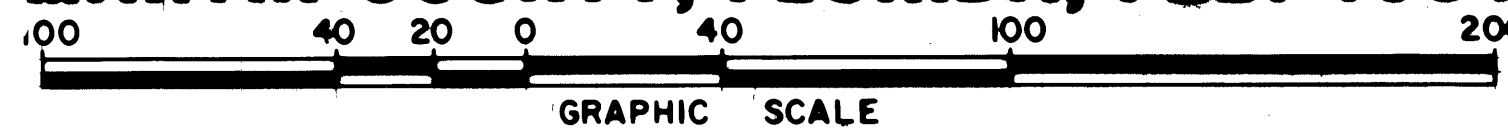


PL 8
PG 63

RIVER PINES

AT MILES GRANT PHASE 10 OF A P.U.D.

A RESUBDIVISION OF GOVERNMENT LOT 3
IN SECTION 20, TOWNSHIP 38 SOUTH, RANGE 42 EAST,
MARTIN COUNTY, FLORIDA, FEB. 1981



- NOTE:
- FOR CURVE TABLES AND NOTES SEE SHEET 1 OF 5.
 - LINE "A" - NO BUILDINGS ARE PERMITTED EASTERLY OF LINE "A".

ADAIR & BRADY, INC. CONSULTING ENGINEERS & LAND SURVEYORS <small>LAKE WORTH WEST PALM BEACH ORLANDO</small>		RIVER PINES AT MILES GRANT	
SCALE 1" = 40'	OWN M.W.	DATE 2/81	SHEET 2 OF 5
JOB NO. 6-8525D	CHKD J.G.A.	DATE 2/81	
		PG.	FP 1155